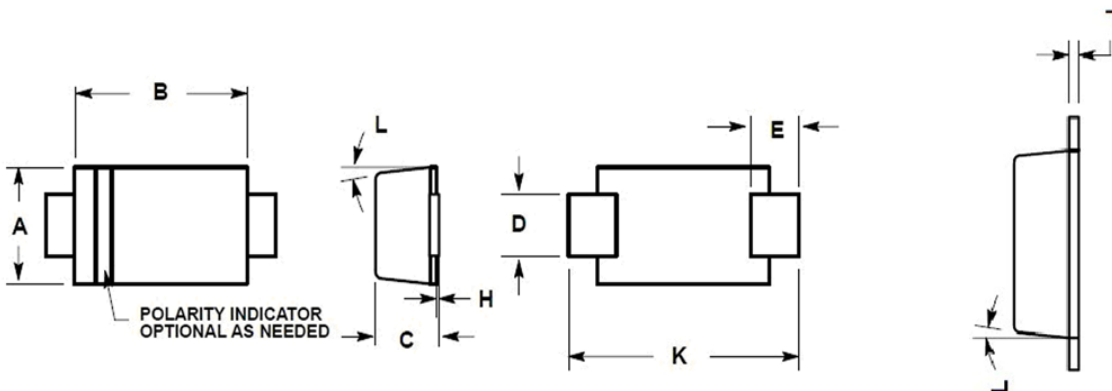


特性/机械性能:
FEATURES/MECHANICAL DATE

- ◆Extremely low minority carrier lifetime.
- ◆Very low capacitance.
- ◆Low reverse leakage.
- ◆Pb-Free packages are available.
- ◆Schottky barrier diodes.



SOD-123

产品外形尺寸:
Product appearance size


DIM	MILLIMETERS		INCHES	
	MIN	MAX	MIN	MAX
A	1.50	1.80	0.059	0.071
B	2.50	2.90	0.098	0.114
C	0.90	1.20	0.035	0.047
D	0.70	1.10	0.028	0.043
E	0.50	0.95	0.020	0.037
H	0.00	0.10	0.000	0.004
J	0.10	0.20	0.004	0.008
K	3.40	3.90	0.134	0.154
L	0°	8°	0°	8°

最大额定值及电气特性
MAXIMUM RATINGS AND CHARACTERISTICS

Parameter	Symbol	LIMITS	Unit
Repetitive Peak Reverse Voltage	V _R	30	V
MMSD301		70	
MMSD701			
Forward Continuous Current	I _F	200	mA
Power Dissipation	P _d	225	mW
Junction temperature	T _j	-55 to +125	°C
Storage Temperature range	T _{stg}	-65 to +150	°C

ELECTRICAL CHARACTERISTICS @ Ta=25°C unless otherwise specified

Parameter	Symbol	Conditions	MIN.	Typ.	MAX.	Unit
Reverse breakdown voltage	V(BR)R	I _R =10μA	30			V
MMSD301			70			
MMSD701						
Forward voltage	V _F	I _F =1.0mA		0.38	0.45	V
		I _F =10mA		0.52	0.6	
		I _F =1.0mA		0.42	0.5	
		I _F =10mA		0.7	1.0	
Reverse current	I _R	V _R =25V		13	200	nA
		V _R =35V		9.0	200	nA
Diode capacitance	C _d	V _R =0V f=1MHz		0.9	1.5	pF
				0.5	1.0	

特性曲线图:

RATINGS AND CHARACTERISTIC CURVES

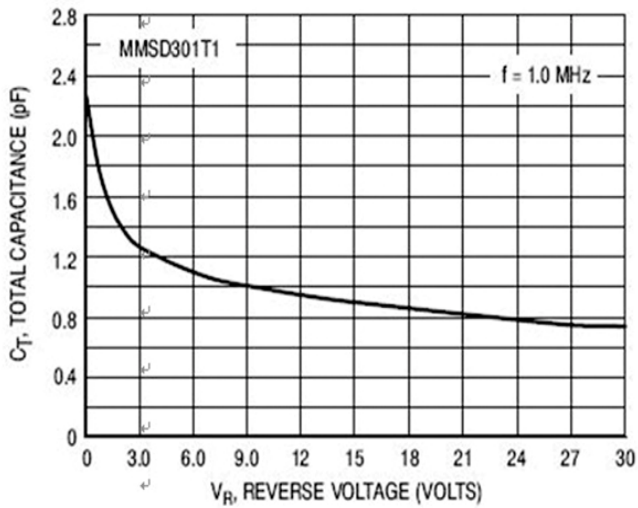


Figure 1. Total Capacitance

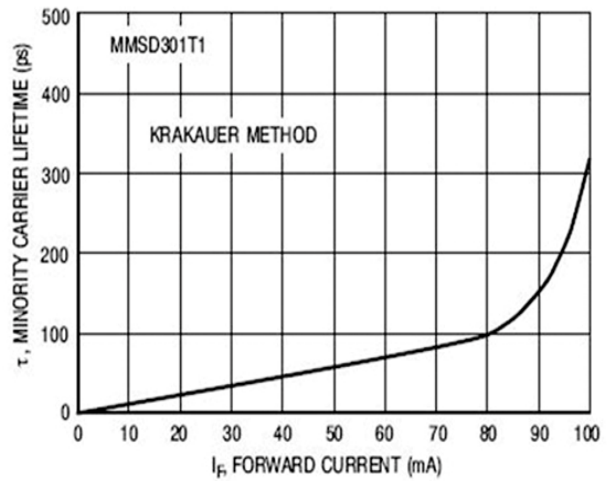


Figure 2. Minority Carrier Lifetime

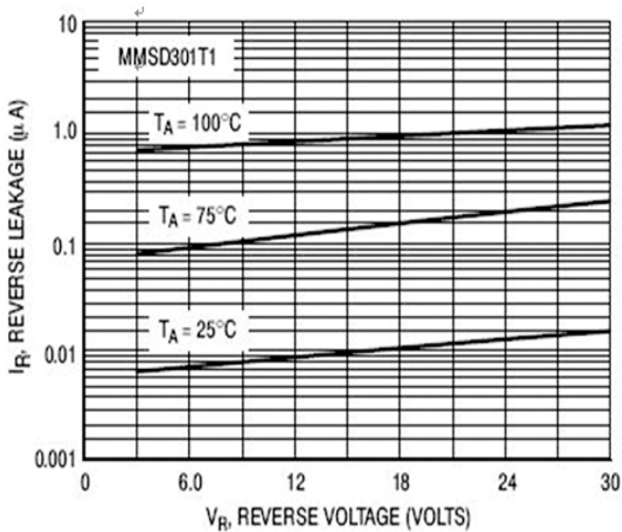


Figure 3. Reverse Leakage

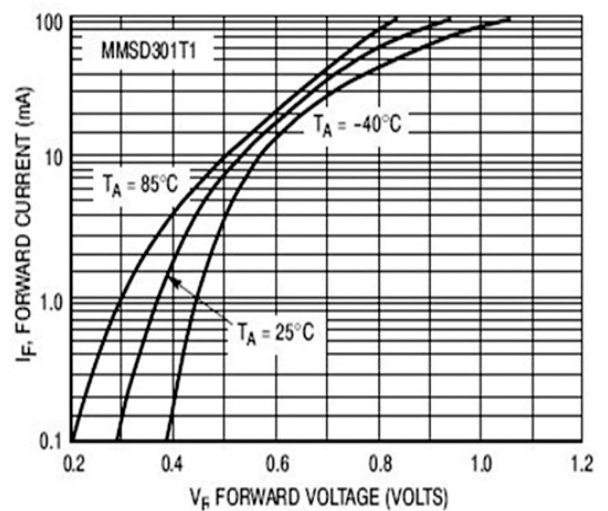


Figure 4. Forward Voltage

特性曲线图:

RATINGS AND CHARACTERISTIC CURVES

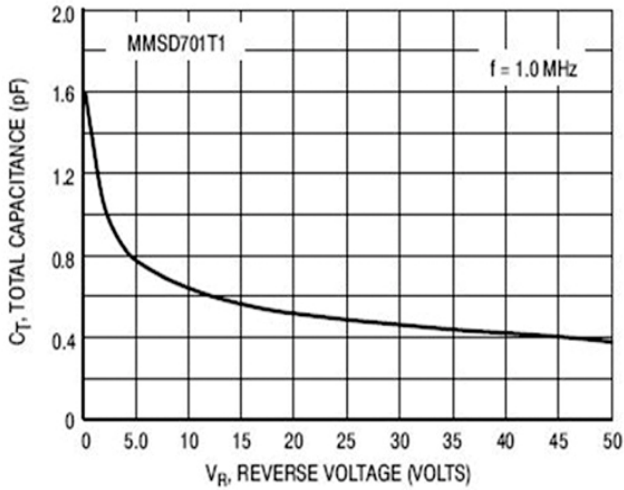


Figure 5. Total Capacitance

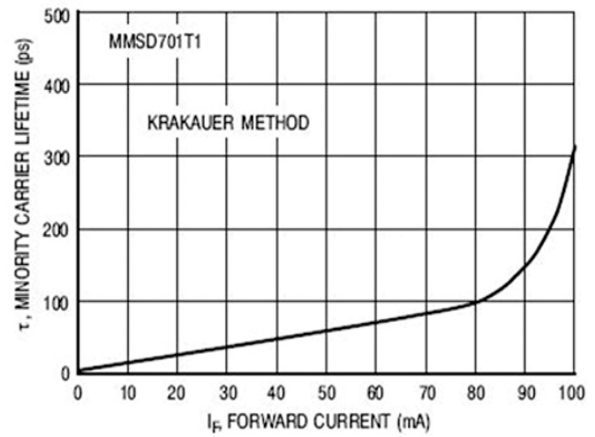


Figure 6. Minority Carrier Lifetime

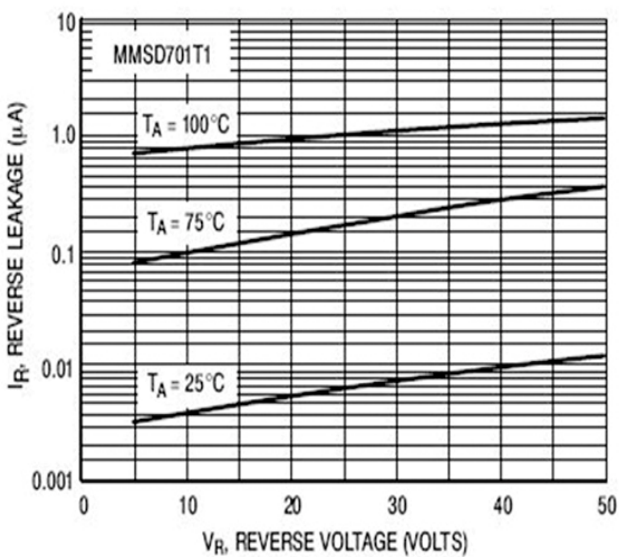


Figure 7. Reverse Leakage

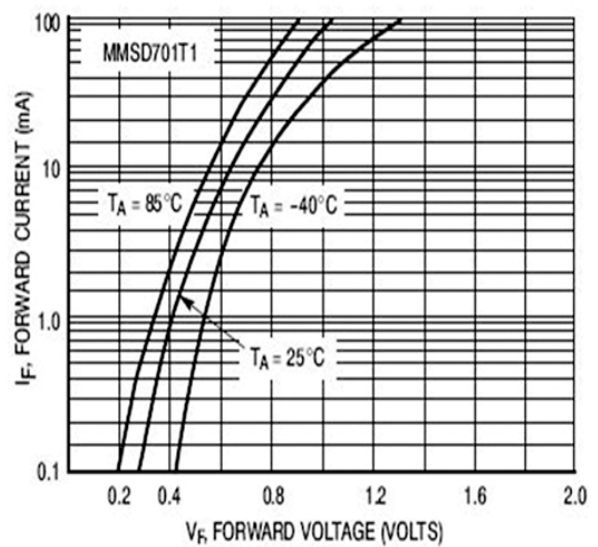


Figure 8. Forward Voltage