

特性/机械性能:
FEATURES/MECHANICAL DATE

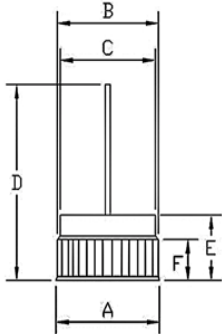
- ◆ 正向压降低. Low forward voltage drop
- ◆ 低漏电. Low leakage current
- ◆ 高浪涌承受能力. High surge current capability
- ◆ 35A 工作在表面温度是125℃,无热损耗的情况下.
35Ampere Operation At TL=125℃ With No Thermal Runaway
- ◆ 封装:铜材质. Case: Copper
- ◆ 端子:镀金端子,焊接按照MIL-STD-202,方法208.
Terminals: Plated terminals, solderable per MIL-STD-202, method 208.
- ◆ 极性: 灌注红色环氧树脂(端子为正/P型)
灌注黑色环氧树脂(端子为负/N型)
Polarity : By RED Color Epoxy Potting. (Positive)
By BLACK Color Epoxy Potting. (Negative)
- ◆ 重量: 6.8克. Weight: 6.8grams


极限值和电参数:
MAXIMUM RATINGS AND CHARACTERISTICS

TA= 25℃除非另有规定。单相, 正半弦波, 60HZ, 阻抗或电感负载. 为电容装载, 减少电流的20%。
 Rating at 25℃ ambient temperature unless otherwise specified. Single phase, half wave, 60HZ, resistive or inductive load. For capacitive load, derate current by 20%

型号TYPE	符号SYMBOL	DR3500	DR3501	DR3502	DR3504	DR3506	DR3508	DR3510	单位UNITS
最大峰值反向电压 Maximum Current Peak Reverse Voltage	VRRM	50	100	200	400	600	800	1000	V
最大反向有效值电压 Working Peak Reverse Voltage	VRMS	35	70	140	280	420	560	700	V
最大直流截止电压 Maximum DC Blocking Voltage	VDC	50	100	200	400	600	800	1000	V
最大正向平均整流电流 Ta=100℃, Maximum Average Forward Rectified Current	IF (AV)	35							A
峰值正向浪涌电流 Peak Forward Surge Current 8.3ms Single Sine-wave on Rated Load (JEDEC Method)	IFSM	400							A
最大瞬间正向电压@100A Maximum Instantaneous Forward Voltage Drop at 100A DC	VF	1.05							V
最大反向直流电流 Maximum DC Reverse Current Ta = 25℃ at Rated DC Blocking Voltage Ta = 150℃	IR	1.0 200							μA μA
典型结电容 Typical Junction Capacitance (NOTE 1)	CJ	100							pF
工作及储存温度范围 Operating AND Storage Temperature Range	TJ, TSTG	-55~+150							℃

产品外形尺寸: Product appearance size



A=∅13.0±0.2mm B=∅12.76±0.02mm
C=∅11.4±0.2mm D=25.0mm
E=7.90±0.2mm F=4.15%±0.20mm

Dimension in millimeters.

特性曲线图: RATINGS AND CHARACTERISTIC CURVES

FIG. 1 –最大正向平均电流降额
FIG. 1 –MAXIMUM AVERAGE FORWARD CURRENT DERATING

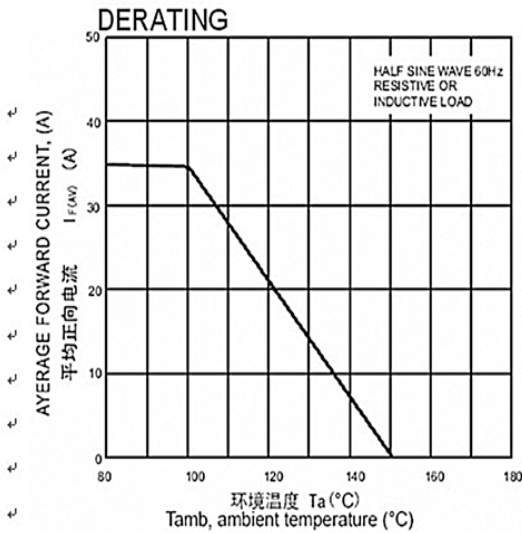


FIG. 2 –最大非重复正向浪涌电流
FIG. 2 –MAXIMUM NON-REPETITIVE FORWARD SURGE CURRENT

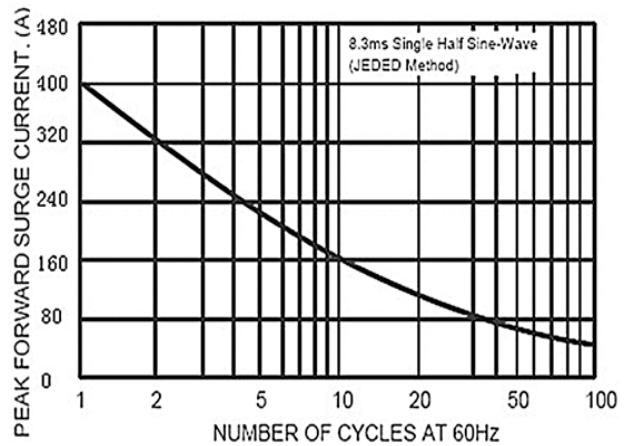


FIG. 3 –反向特性曲线(典型)
FIG. 3 –TYPICAL REVERSE CHARACTERISTICS.

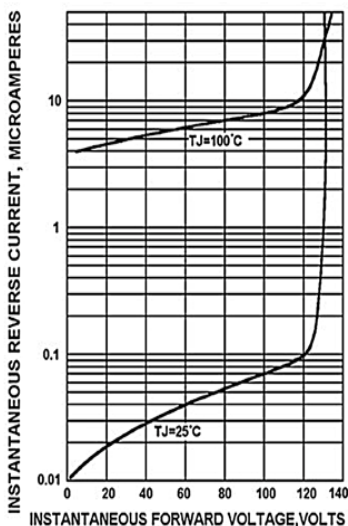


FIG. 4 –正向特性曲线(典型)
FIG. 4 –TYPICAL FORWARD CHARACTERISTICS

