

# Test Report

Report No. RLTJE00008569

Page 1 of 7

**Applicant** GAOMI FEI SHI LONG DA ELECTRONICS CO.,LTD

**Address** NO.2333 SHENGQUAN STREET,GAOMI CITY,SHANDONG PROVINCE

**The following sample(s) and sample information was/were submitted and identified by/on the behalf of the client**

Sample Name	1.Metal with silver color plating	2.Diode ontology
Part No.	1.metal	2.Epoxy resin
Material	1 tin	2.plastic
Package	DO-41	
Sample Received Date	Oct. 9, 2012	
Testing Period	Oct. 9, 2012 to Oct. 12, 2012	

**Test Requested** As specified by client, to test Lead(Pb), Cadmium(Cd), Mercury(Hg), Hexavalent Chromium(Cr(VI)), Polybrominated Biphenyls(PBBs), Polybrominated Diphenyl Ethers(PBDEs) in the submitted sample(s).

## Test Method

Tested Item(s)	Test Method	Measured Equipment(s)	MDL
Lead (Pb)	IEC 62321:2008 Ed.1 Sec.8/9	ICP-OES	2 mg/kg
Cadmium (Cd)	IEC 62321:2008 Ed.1 Sec.8/9	ICP-OES	2 mg/kg
Mercury (Hg)	IEC 62321:2008 Ed.1 Sec.7	ICP-OES	2 mg/kg
Hexavalent Chromium (Cr(VI))	IEC 62321:2008 Ed.1 Annex C	UV-Vis	2 mg/kg
	IEC 62321:2008 Ed.1 Annex B	UV-Vis	/
Polybrominated Biphenyls (PBBs)	IEC 62321:2008 Ed.1 Annex A	GC-MS	5 mg/kg
Polybrominated Diphenyl Ethers (PBDEs)	IEC 62321:2008 Ed.1 Annex A	GC-MS	5 mg/kg

**Test Result(s)** Please refer to the following page(s).

Tested by

*Allen Wang*  


Reviewed by

*Andy Chang*

Approved by

*Allen Wang*

Date

Oct. 12, 2012

Allen Wang

Technical Manager

Centre Testing International (Tianjin) Co., Ltd.

No. 14286288

No.99, Xianfeng East Road, Dongli District, Tianjin, China

# Test Report

Report No. RLTJE00008569

Page 2 of 7

## Test Result(s)

Tested Item(s)	Result	
	Sample 1	Sample 2
Lead (Pb)	N.D.	N.D.
Cadmium (Cd)	N.D.	N.D.
Mercury (Hg)	N.D.	N.D.
Hexavalent Chromium (Cr(VI))	Negative	N.D.

Tested Item(s)	Result
	Sample 2
Polybrominated Biphenyls(PBBs)	
Monobromobiphenyl	N.D.
Dibromobiphenyl	N.D.
Tribromobiphenyl	N.D.
Tetrabromobiphenyl	N.D.
Pentabromobiphenyl	N.D.
Hexabromobiphenyl	N.D.
Heptabromobiphenyl	N.D.
Octabromobiphenyl	N.D.
Nonabromobiphenyl	N.D.
Decabromobiphenyl	N.D.
Polybrominated Diphenyl Ethers(PBDEs)	
Monobromodiphenyl ether	N.D.
Dibromodiphenyl ether	N.D.
Tribromodiphenyl ether	N.D.
Tetrabromodiphenyl ether	N.D.
Pentabromodiphenyl ether	N.D.
Hexabromodiphenyl ether	N.D.
Heptabromodiphenyl ether	N.D.
Octabromodiphenyl ether	N.D.
Nonabromodiphenyl ether	N.D.
Decabromodiphenyl ether	N.D.

**Tested Sample/Part Description** 1.Metal with silvery plating 2.Black resin

**Note:** The sample had been dissolved totally tested for Lead, Cadmium, Mercury.

-MDL = Method Detection Limit

-N.D. = Not Detected (&lt;MDL)

-mg/kg = ppm = parts per million

 -Negative = Absence of Cr(VI), the detected Cr(VI) concentration in the boiling water extraction solution is less than 0.02 mg/kg with 50cm<sup>2</sup> sample surface area used.

# Test Report

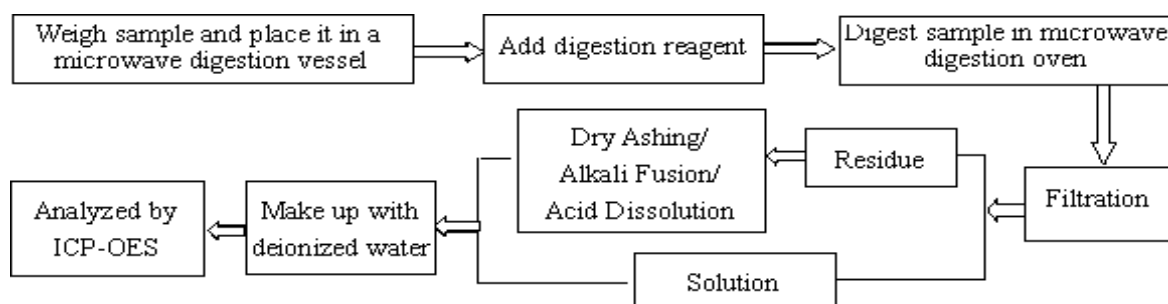
Report No. RLTJE00008569

Page 3 of 7

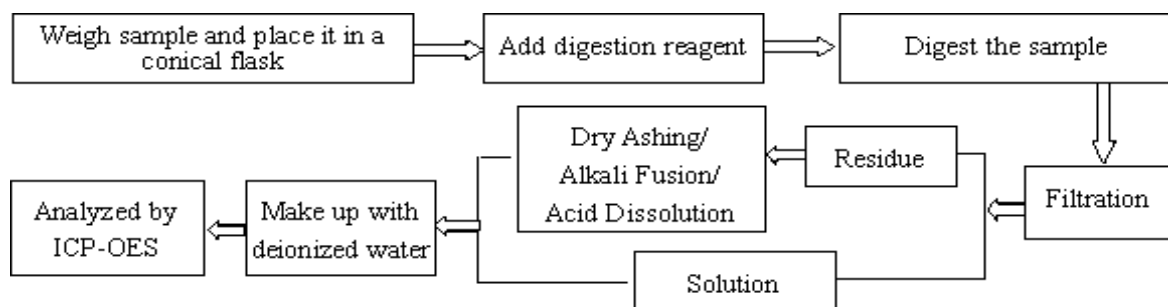
**Remark:** According to client declaration, the submitted sample's package DO-15;R-1;17-02;DO-201AE; DO-201AD;P600;SOD-123;SMA(压扁式);SMA(框架式);SMB(压扁式);SMB(框架式);SMC; SMD;AUTO;AUTO-LINE;BLOCK;MBS and the tested sample's package DO-41 are made from the same material.

## Test Process

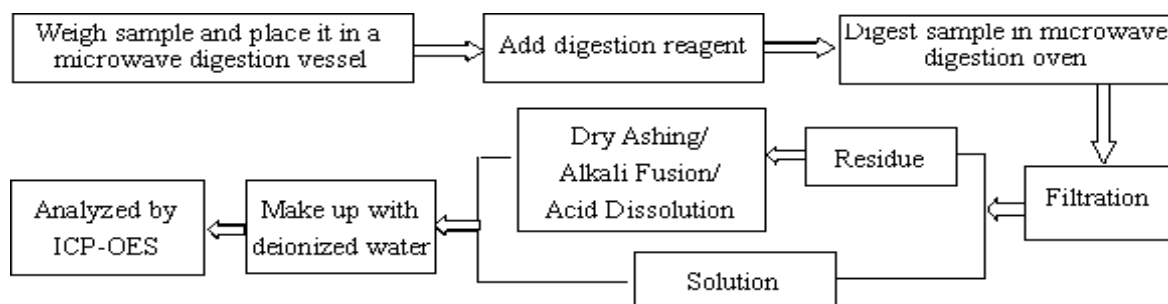
### 1.1) Lead(Pb), Cadmium(Cd)



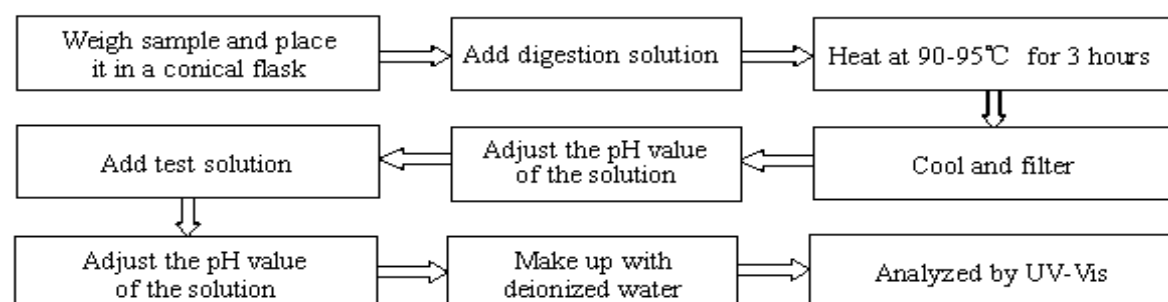
### 1.2) Lead(Pb), Cadmium(Cd)



## 2. Mercury(Hg)



### 3.1) Hexavalent Chromium(Cr(VI))

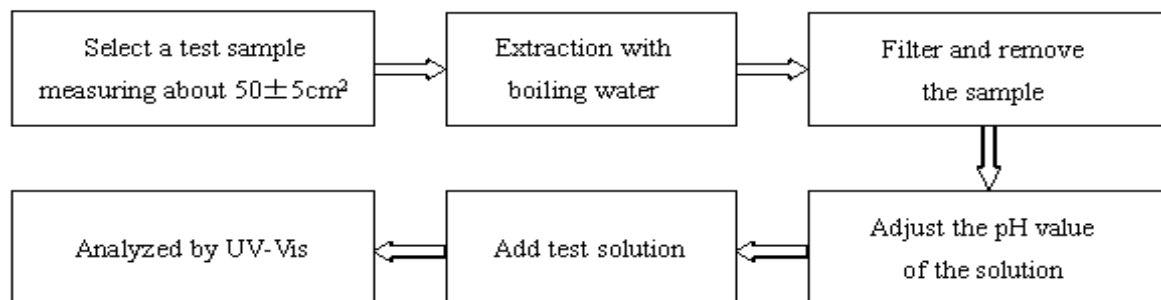


# Test Report

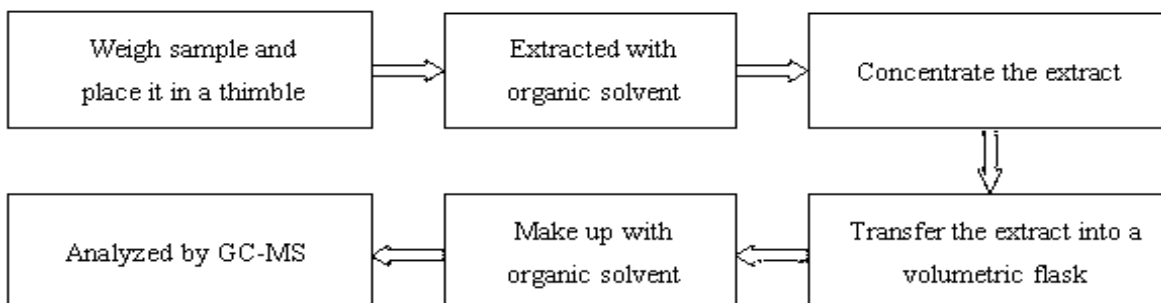
Report No. RLTJE00008569

Page 4 of 7

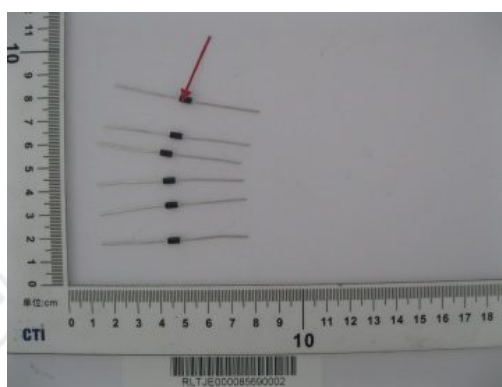
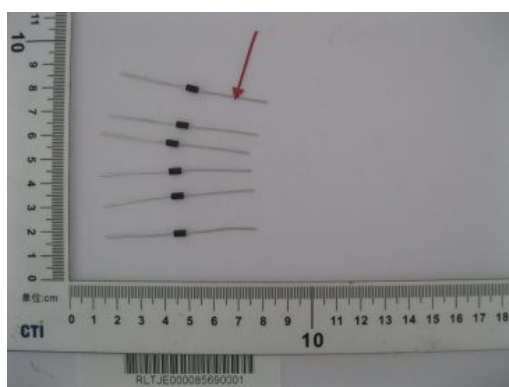
## 3.2) Hexavalent Chromium(Cr(VI))



## 4. Polybrominated Biphenyls(PBBs), Polybrominated Diphenyl Ethers(PBDEs)



## Photo(s) of the sample(s)



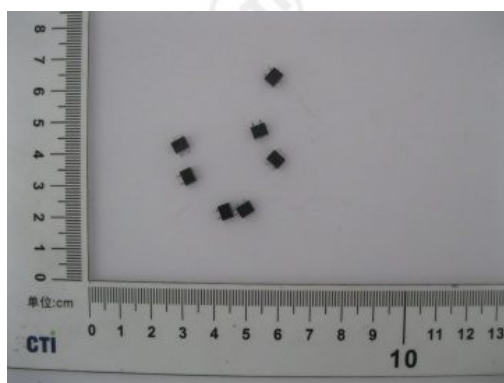
DO-41

# Test Report

Report No. RLTJE00008569

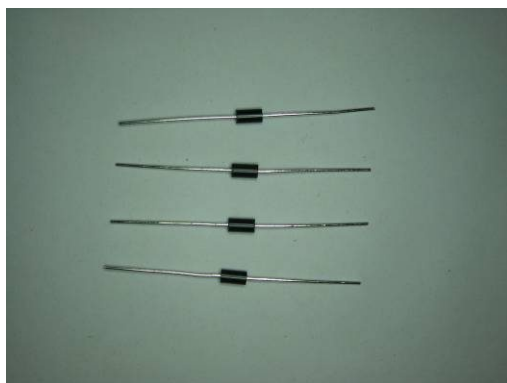
Page 5 of 7

## Photo(s) of the sample(s)



MBS

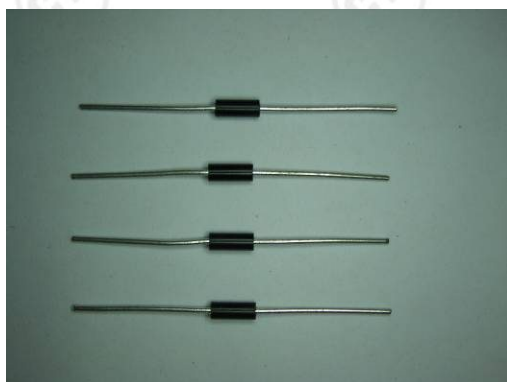
At the request of client, the following photos are provided by applicant and for reference only.



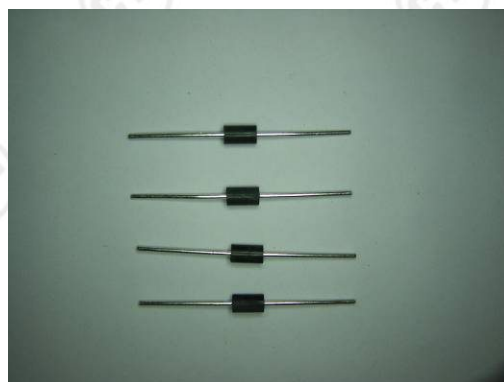
DO-15



R-1



17-02



DO-201AE

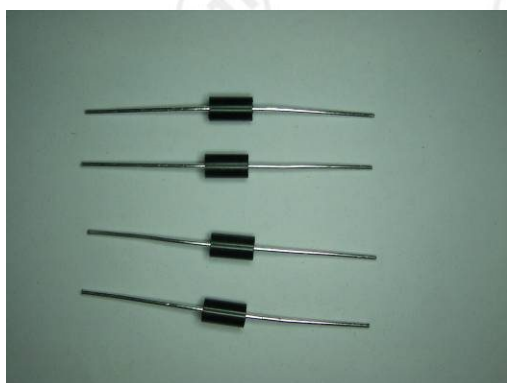


# Test Report

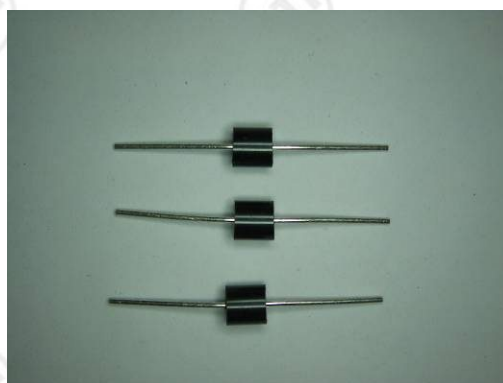
Report No. RLTJE00008569

Page 6 of 7

## Photo(s) of the sample(s)



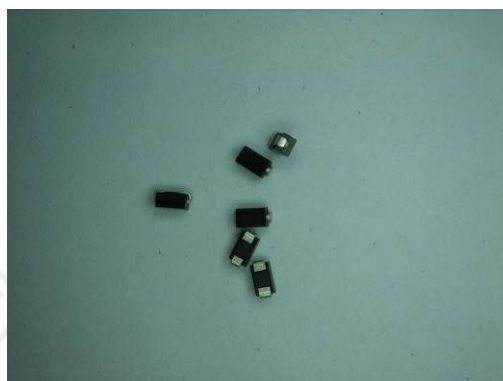
DO-201AD



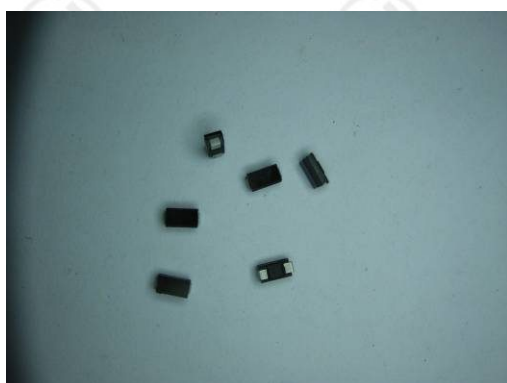
P600



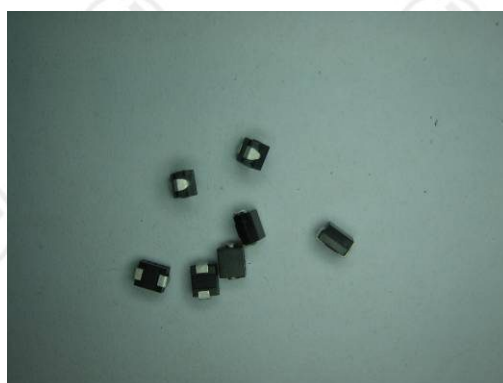
SOD-123



SMA(压扁式)



SMA(框架式)



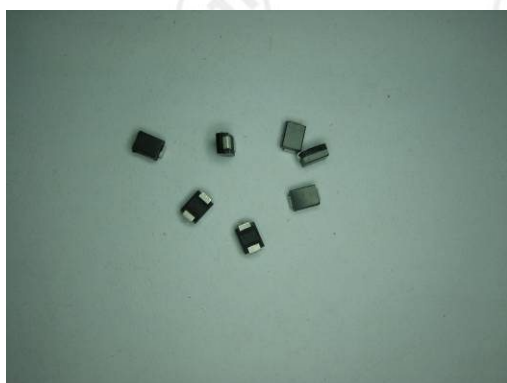
SMB(压扁式)

# Test Report

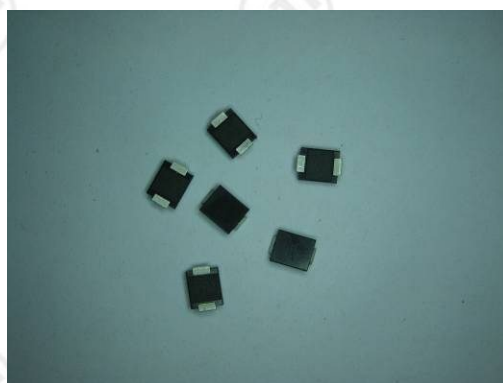
Report No. RLTJE00008569

Page 7 of 7

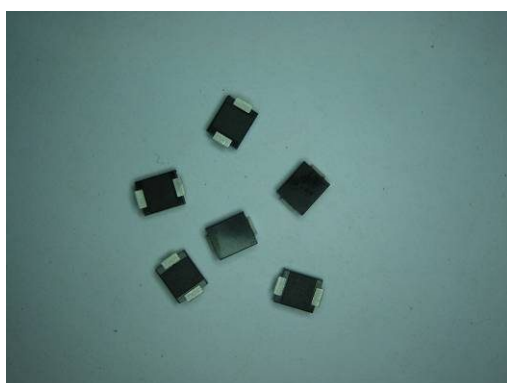
## Photo(s) of the sample(s)



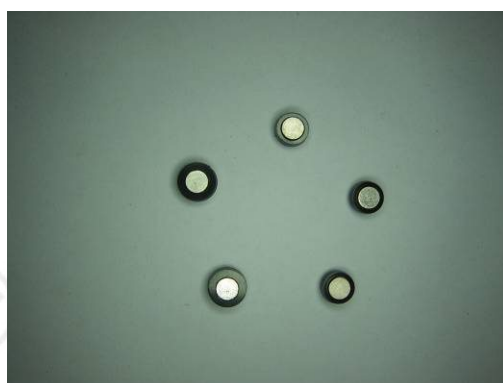
SMB(框架式)



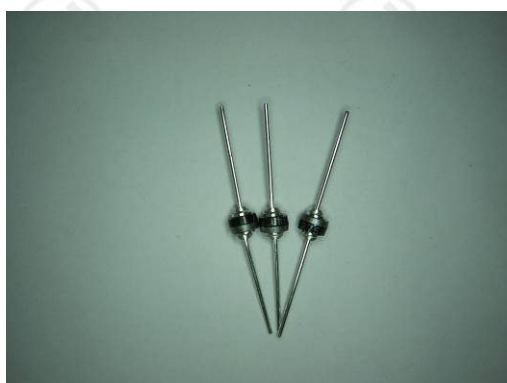
SMC



SMD



AUTO



AUTO-LINE



BLOCK

\*\*\* End of report \*\*\*

The test report is effective only with both signature and specialized stamp. The result(s) shown in this report refer only to the sample(s) tested. Without written approval of CTI, this report can't be reproduced except in full.